



## Wild Tulips

Needle turn applique workshop

Easy needle turn applique. All skill levels are welcome! We will cover points, valleys, stems, and curves. In the class we will create one block and a scallop border. The supply list gives requirements to make the entire quilt which measures 45" x 45".

Each block is 18" finished.

### Fabric requirements

Cream plaid- 1 yard

Cream stripe - 1 1/8 yards

Assorted black- 1 yard total

Assorted green- 1 1/4 yard total

Assorted red-  $\frac{1}{2}$  yard total

Assorted gold-  $\frac{3}{8}$  yard total

Assorted blue-  $\frac{1}{4}$  yard total

For my quilt I used a mix of cotton prints and wovens to create texture.

### Additional Supplies

Freezer paper

Sharpie

Scissors

Chalk pencil or fabric marking pen

Iron

Applique pins

Milliner size 11 needle

Aurifil 80 wt thread in colors to match your fabrics or a neutral such as #2370

Fray block

Clover  $\frac{3}{4}$ " bias tape maker

Rotary cutter, mat and ruler

### BEFORE THE CLASS

You will need to piece the background of a block prior to the class following the instructions below.

From the cream plaid cut:

1-  $9\frac{1}{2}$ " square

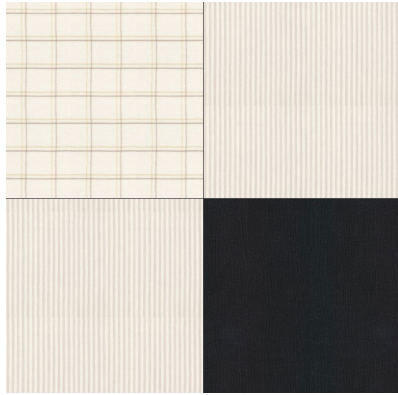
From the cream stripe cut:

2-  $9\frac{1}{2}$ " squares

From the black cut:

1- 9  $\frac{1}{2}$ " square

Join two cream stripe squares with a cream plaid square and a black square to create a pieced 18  $\frac{1}{2}$ " block.



Seal the edges with Fray Block to prevent raveling and distortion.

For the border you will need to cut a - 4  $\frac{1}{2}$ " x 36  $\frac{1}{2}$ " strip from either the cream stripe or cream plaid. Seal the edges with Fray block.

You are ready for the workshop!