



PLEASE REVIEW BEFORE PROCEEDING

Sewing Machines for this class are provided by BERNINA of America & Mel's Sewing & Fabric Center.

Due to safety concerns and contractual obligations, you are NOT permitted to use any machine other than the machines provided by BERNINA.

Please do not bring your own Sewing Machine to this class.

Teacher supply lists are generic - they include items that we either provide or are not permitted. Please do not bring individual irons, craft irons or any other type of iron to class. Please review the class info page on www.road2ca.com for more information.



PARIS, JE T'AIME

*A Dual Technique Journey in
Foundation Paper Piecing & Appliqué*



WELCOME

Welcome and Thank You for signing up to “Paris, Je T’Aime” a modern tribute that blends the crisp precision of FPP with the layered dimension of applique to create a vibrant quilt featuring Parisian landmarks.

Please read below regarding items that **MUST** be completed **BEFORE** our time together begins.



Veruschka Zarate of
PRIDE & JOY QUILTING

PRIDEANDJOYQUILTING@GMAIL.COM ✉

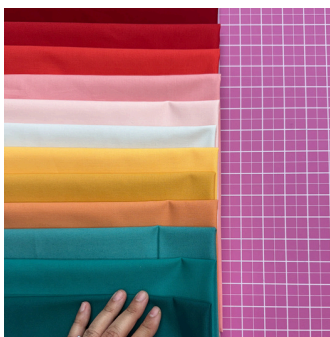
PRIDEANDJOYQUILTING.COM 📱

213. 804. 3888 ☎

PATTERN PREP



FABRIC PREP



SUPPLIES PREP



PATTERN

- The Workshop Project is available in TWO forms:
- (1) as a **PDF Digital Download**. This is the most economical option. You will need to print out the pattern on lettersize recycled copy paper in **FULL** color, source your own fabrics, supplies and materials.
- Once you download and print the pattern, you can use the color samples found within the pattern to source your fabrics. You can use solids, or Grudge or Batiks or patterned fabrics. As long as the hue and value are similar to the color samples--it will work! **Price: \$35**
- (2) a **Workshop Project KIT**: This must be ordered **no later than DECEMBER 01, 2025**. The Kit will include: a Full Color Paper Pattern with all FPP and Applique templates, a Fabric Bundle of Moda Bella Solids, freezer paper, paint brush, small bottle of starch, fusible webbing, pencil, Decobob 80wt Thread Spool, Machine Needle and Thread Needle and other goodies. **Price: \$250**
- **Both Items and more detailed information is available on prideandjoyquilting.com**

SEWING MACHINE

- For Foundation Paper Piecing, you just need a solid, straight stitch sewing machine.
- FOOT-An open toe foot is recommended in order to see the sew line clearly.
- At ROAD2CA a Sewing Machine will be provided within the classroom.

NOTIONS & TOOLS

- I recommend making a list of your personal sewing items that make you comfortable and will ensure your sewing experience is as enjoyable as possible, such as fresh needles, fresh rotary blades, extra lighting, extension cords, etc.
- Below are some items and supplies to consider for our class together:
- FPP:
 - IRONING:
 - Small iron
 - Tailors Clapper
 - Wool Mat
 - Pressing surface
 - Small spray bottle
 - CUTTING:
 - A small cutting mat
 - Rotary cutter
 - Fabric scissors
 - Paper scissors
 - RULERS:
 - Ideally an "12in ADD a Quarter Ruler" OR
 - (1) straight edge ruler AND (1) 6in Quilting Ruler
- APPLIQUE
 - Freezer Paper
 - Paint Brush
 - Starch
 - Small Container for Starch
 - (Iron is also needed for Applique)
 - Fusible webbing like "steam 2 stitch" or "flexifuse"
 - Washable School Flue
 - Pencil
 - Decobob 80wt Thread
 - Applique Need of Choice
 - Silicone Non Stick Mat
- MISC ITEMS:
 - lint Roller
 - Wonder clips
 - Pins
 - Seam Ripper
 - Tweezers (My favorite are Swiss Style by Tula Pink)
 - Elmers School Glue stick
 - Pencil
 - IPAD--to see illustrations instead of on paper. (Optional)
 - Small basket for scraps
 - Small Trash Bin
 - White Painters/Artists Tape
 - Light Box or Light Tracing Pad
 - School House Color Pencils
 - Small Portable Design board (Optional)
 - Sticky Notes

